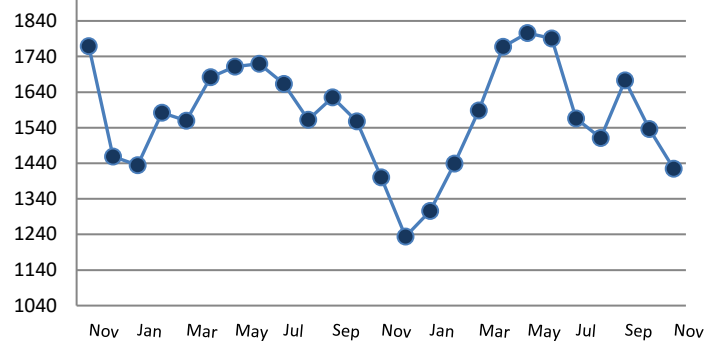


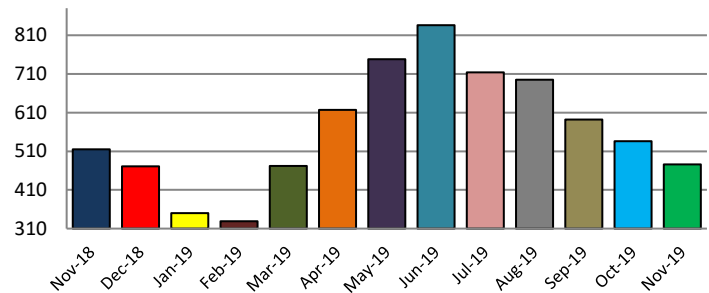
**PENDING**

Price Range	New This Month			Year-To-Date		
	2018	2019	% Change	2018	2019	% Change
0 - 149,999	141	164	16.3%	2046	1836	-10.3%
150,000 - 199,999	55	66	20.0%	844	909	7.7%
200,000 - 299,999	74	110	48.6%	1216	1302	7.1%
300,000 - 399,999	66	66	0.0%	895	1028	14.9%
400,000 - 499,999	17	35	105.9%	437	506	15.8%
500,000 - 599,999	9	21	133.3%	245	273	11.4%
600,000 - 699,999	9	15	66.7%	174	213	22.4%
700,000 - 799,999	7	13	85.7%	104	124	19.2%
800,000 - 899,999	6	4	-33.3%	75	77	2.7%
900,000 - 999,999	3	0	-100.0%	33	38	15.2%
1,000,000 - 1,999,999	9	6	-33.3%	97	107	10.3%
2,000,000 +	1	2	100.0%	16	20	25.0%
<b>TOTALS</b>	<b>397</b>	<b>502</b>	<b>26.4%</b>	<b>6182</b>	<b>6433</b>	<b>4.1%</b>

**INVENTORY TREND**  
*Listings Active at End of Month*



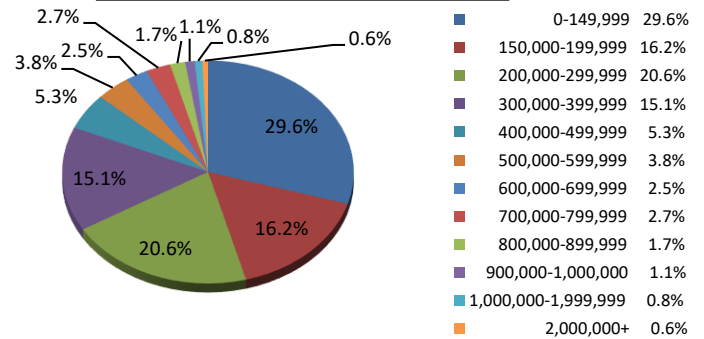
**SALES TREND**  
*Settlements Per Month*



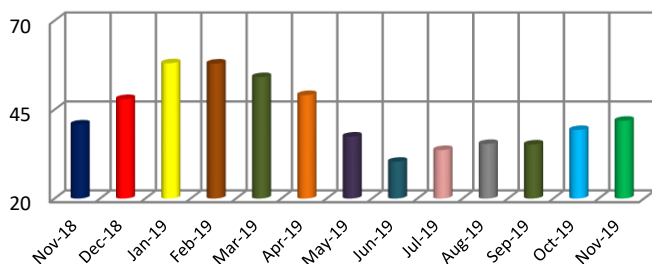
**SETTLEMENTS**

Price Range	New This Month			Year-To-Date		
	2018	2019	% Change	2018	2019	% Change
0 - 149,999	177	141	-20.3%	2055	1888	-8.1%
150,000 - 199,999	76	77	1.3%	839	912	8.7%
200,000 - 299,999	101	98	-3.0%	1195	1286	7.6%
300,000 - 399,999	74	72	-2.7%	854	973	13.9%
400,000 - 499,999	35	25	-28.6%	444	471	6.1%
500,000 - 599,999	16	18	12.5%	264	268	1.5%
600,000 - 699,999	16	12	-25.0%	186	191	2.7%
700,000 - 799,999	9	13	44.4%	93	119	28.0%
800,000 - 899,999	3	8	166.7%	60	103	71.7%
900,000 - 999,999	2	5	150.0%	26	42	61.5%
1,000,000 - 1,999,999	4	4	0.0%	80	95	18.8%
2,000,000 +	2	3	50.0%	15	17	13.3%
<b>TOTALS</b>	<b>515</b>	<b>476</b>	<b>-7.6%</b>	<b>6111</b>	<b>6365</b>	<b>4.2%</b>

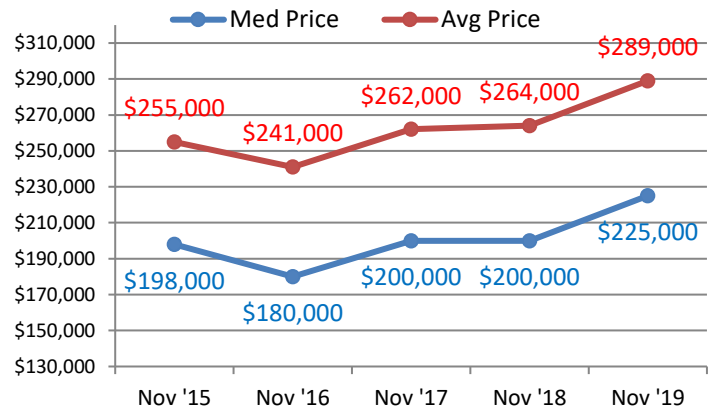
**SETTLEMENTS BY PRICE RANGE**



**AVERAGE DAYS ON MARKET**



**AVERAGE & MEDIAN PRICE**



DATA SOURCE: Trend Multiple Listing Service

NOTES: Properties not listed through this MLS are not reflected. The term "sales" represents ratified purchase contracts. Current year information is preliminary and subject to revision. Current year-to-date contract information may not equal the sum of the monthly contract totals reported above