

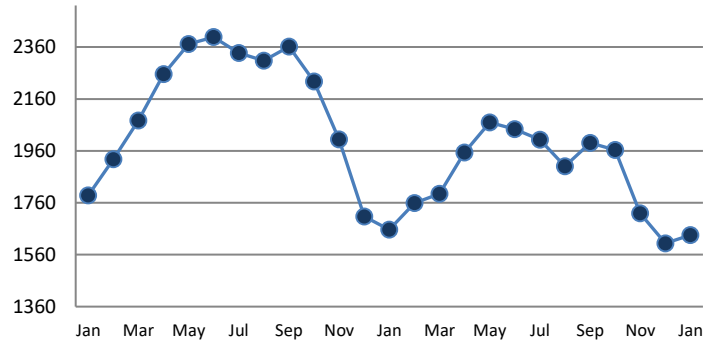
**PENDING**

Price Range	New This Month			Year-To-Date		
	2018	2019	% Change	2018	2019	% Change
0 - 149,999	34	29	-14.7%	34	29	-14.7%
150,000 - 199,999	36	38	5.6%	36	38	5.6%
200,000 - 299,999	110	116	5.5%	110	116	5.5%
300,000 - 399,999	105	115	9.5%	105	115	9.5%
400,000 - 499,999	78	69	-11.5%	78	69	-11.5%
500,000 - 599,999	33	42	27.3%	33	42	27.3%
600,000 - 699,999	21	24	14.3%	21	24	14.3%
700,000 - 799,999	16	5	-68.8%	16	5	-68.8%
800,000 - 899,999	5	6	20.0%	5	6	20.0%
900,000 - 999,999	7	7	0.0%	7	7	0.0%
1,000,000 - 1,999,999	5	7	40.0%	5	7	40.0%
2,000,000 +	1	0	-100.0%	1	0	-100.0%
<b>TOTALS</b>	<b>451</b>	<b>458</b>	<b>1.6%</b>	<b>451</b>	<b>458</b>	<b>1.6%</b>

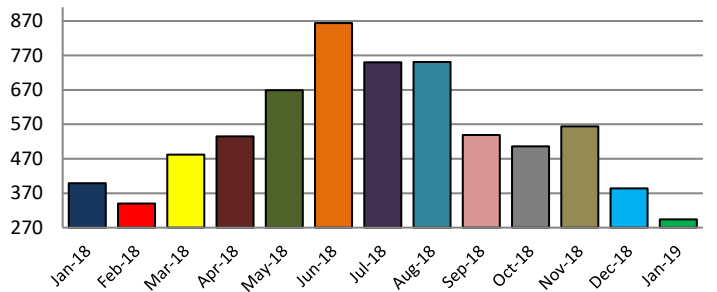
**SETTLEMENTS**

Price Range	New This Month			Year-To-Date		
	2018	2019	% Change	2018	2019	% Change
0 - 149,999	24	21	-12.5%	24	21	-12.5%
150,000 - 199,999	37	18	-51.4%	37	18	-51.4%
200,000 - 299,999	101	65	-35.6%	101	65	-35.6%
300,000 - 399,999	91	67	-26.4%	91	67	-26.4%
400,000 - 499,999	61	51	-16.4%	61	51	-16.4%
500,000 - 599,999	36	32	-11.1%	36	32	-11.1%
600,000 - 699,999	21	14	-33.3%	21	14	-33.3%
700,000 - 799,999	8	10	25.0%	8	10	25.0%
800,000 - 899,999	5	6	20.0%	5	6	20.0%
900,000 - 999,999	2	3	50.0%	2	3	50.0%
1,000,000 - 1,999,999	12	6	-50.0%	12	6	-50.0%
2,000,000 +	1	1	0.0%	1	1	0.0%
<b>TOTALS</b>	<b>399</b>	<b>294</b>	<b>-26.3%</b>	<b>399</b>	<b>294</b>	<b>-26.3%</b>

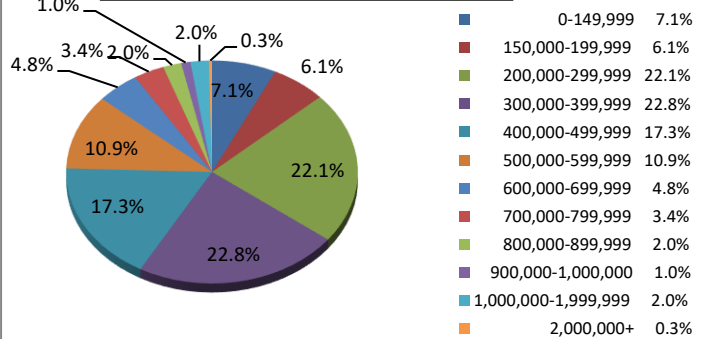
**INVENTORY TREND**  
*Listings Active at End of Month*



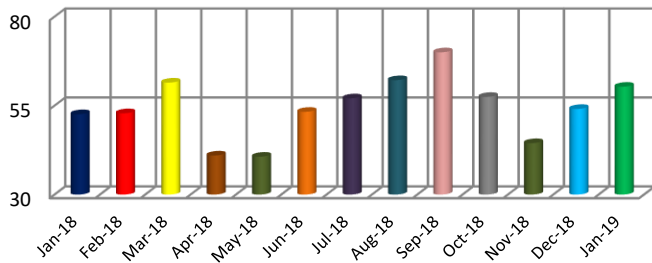
**SALES TREND**  
*Settlements Per Month*



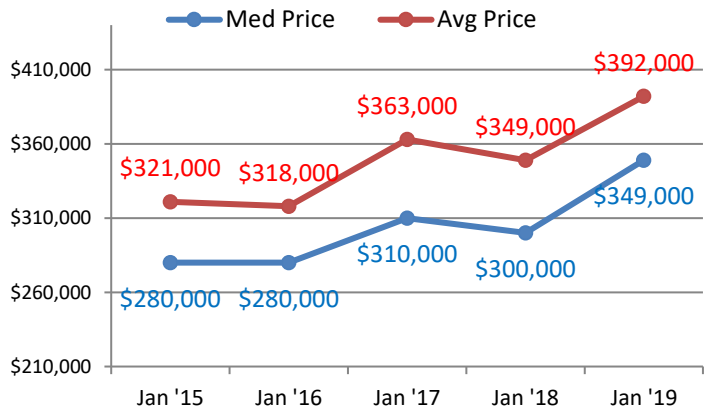
**SETTLEMENTS BY PRICE RANGE**



**AVERAGE DAYS ON MARKET**



**AVERAGE & MEDIAN PRICE**



DATA SOURCE: Trend Multiple Listing Service

NOTES: Properties not listed through this MLS are not reflected. The term "sales" represents ratified purchase contracts. Current year information is preliminary and subject to revision. Current year-to-date contract information may not equal the sum of the monthly contract totals reported above